

# Selective Interference with Syntactic Encoding during Sentence Production by Direct Electroconvulsive Stimulation of the Inferior Frontal Gyrus

Edward F. Chang<sup>1</sup>, Garret Kurteff<sup>1</sup>, and Stephen M. Wilson<sup>2</sup>

## Abstract

■ Cortical stimulation mapping (CSM) has provided important insights into the neuroanatomy of language because of its high spatial and temporal resolution, and the causal relationships that can be inferred from transient disruption of specific functions. Almost all CSM studies to date have focused on word-level processes such as naming, comprehension, and repetition. In this study, we used CSM to identify sites where stimulation interfered selectively with syntactic encoding during sentence production. Fourteen patients undergoing left-hemisphere neurosurgery participated in the study. In 7 of the 14 patients, we identified nine

sites where cortical stimulation interfered with syntactic encoding but did not interfere with single word processing. All nine sites were localized to the inferior frontal gyrus, mostly to the pars triangularis and opercularis. Interference with syntactic encoding took several different forms, including misassignment of arguments to grammatical roles, misassignment of nouns to verb slots, omission of function words and inflectional morphology, and various paragrammatic constructions. Our findings suggest that the left inferior frontal gyrus plays an important role in the encoding of syntactic structure during sentence production. ■

## INTRODUCTION

Cortical stimulation mapping (CSM) is widely used to identify critical language and motor sites before resective surgery, so that essential sites can be spared to minimize postoperative deficits (Duffau, Gatignol, Mandonnet, Capelle, & Taillandier, 2008; Haglund, Berger, Shamseldin, Lettich, & Ojemann, 1994; Ojemann, Ojemann, Lettich, & Berger, 1989; Penfield & Roberts, 1959). Because of its high spatial and temporal resolution, CSM has provided important insights into the cortical organization of motor (Krause, 1909), sensory (Cushing, 1909), and language (Duffau et al., 2003, 2005; Ojemann et al., 1989; Ojemann, 1983; Penfield & Roberts, 1959) functions. Although the most commonly used language tasks are picture naming and automatic speech (e.g., counting), CSM studies using a range of other tasks such as phonemic perception (Boatman, 2004), comprehension of spoken and written words (Roux et al., 2015), and repetition of words and pseudowords (Leonard, Cai, Babiak, Ren, & Chang, 2016) have revealed discrete localization of many of the component processes of language. However, only a minority of CSM studies have investigated language processes beyond the level of single words (Rofes & Miceli, 2014).

In this study, we used CSM to investigate the neural substrates of syntactic encoding during sentence production. Syntactic encoding entails the mapping of lexical

items (lemmas) onto thematic and grammatical roles; the generation of hierarchical, linearly sequenced, syntactic constituents; and the inflection of open and closed class words for grammatical categories such as tense and agreement (Ferreira & Engelhardt, 2006; Garrett, 1980). We applied direct electroconvulsive stimulation as patients undergoing awake craniotomy attempted to describe pictures of transitive actions using complete sentences. Three other tasks—counting, picture naming, and repetition—were also performed to determine the specificity of any disturbances of syntactic encoding. We reasoned that any brain regions where cortical stimulation interferes with sentence production, but not with single word or automatic speech tasks, must play an important role in syntactic encoding during sentence production. On the basis of prior lesion-deficit (Sapolsky et al., 2010; Wilson, Henry, et al., 2010) and functional neuroimaging (Haller, Radue, Erb, Grodd, & Kircher, 2005; Indefrey, Hellwig, Herzog, Seitz, & Hagoort, 2004; Indefrey et al., 2001) studies, we hypothesized that the left inferior frontal gyrus (IFG) is critically important for syntactic encoding.

## METHODS

### Participants

Fourteen patients undergoing left-hemisphere awake craniotomy (eight men, six women; mean age = 46 years, age range = 21–70 years) took part in this study (Table 1). The inclusion criteria were (1) awake craniotomy involving

<sup>1</sup>University of California, San Francisco, <sup>2</sup>Vanderbilt University Medical Center

**Table 1.** Patient Demographic and Etiological Information

<i>Patient</i>	<i>Sex</i>	<i>Age</i>	<i>Handedness</i>	<i>Etiology</i>	<i>Site of Resection</i>
P1	M	66	R	Epilepsy	Anterior temporal lobe, hippocampus
P2	F	27	R	Epilepsy and mild gliosis	Anterior temporal lobe, hippocampus
P3	M	46	A	Epilepsy	Hippocampus, amygdala
P4	F	21	L	Epilepsy and gliosis	Anterior temporal lobe, hippocampus, amygdala
P5	F	40	R	Epilepsy	Anterior temporal lobe, hippocampus
P6	F	48	R	Epilepsy	Anterior temporal lobe, hippocampus
P7	M	27	R	Grade III oligodendroglioma	Insula, frontal operculum
P8	M	58	R	Grade IV glioblastoma multiforme	Insula
P9	M	61	R	Grade IV glioblastoma multiforme	Anterior temporal lobe
P10	M	68	R	Grade IV glioblastoma multiforme	Posterior superior temporal gyrus
P11	F	63	R	Grade IV glioblastoma multiforme	Insula
P12	M	27	R	Cavernous malformation	Inferior temporal lobe
P13	F	70	R	Cavernous malformation	Ventral precentral gyrus
P14	M	30	R	Cavernous malformation	Medial temporal lobe, head of hippocampus

A = ambidextrous; F = female; L = left-handed; M = male; R = right-handed.

electrocortical stimulation mapping to identify and preserve eloquent cortex, (2) first-time brain surgery, (3) significant exposure of the left frontal and temporal perisylvian cortex, and (4) no significant preoperative language deficits, per the Western Aphasia Battery (Kertesz, 1982) or the Quick Aphasia Battery (Wilson, Eriksson, Schneck, & Lucanie, 2017).

Etiology was epilepsy in six cases, glioma in five cases, and cavernous malformation in three cases. Resection sites are outlined in Table 1. Twelve of the patients were right-handed, one (P4) was left-handed with mixed language dominance per Wada testing, and one (P3) was ambidextrous with left-lateralized language dominance per Wada testing. Twelve of the patients were native speakers of English, and the remaining two (P2 and P13) were fluent in English. One patient (P8) underwent a second awake resection 7 months later, and the data obtained during this second procedure were also included in the study.

The study was approved by the University of California, San Francisco, Human Research Protection Program. All CSM was carried out for clinical purposes, including the sentence production component. Participants gave written informed consent for the use of these data for research.

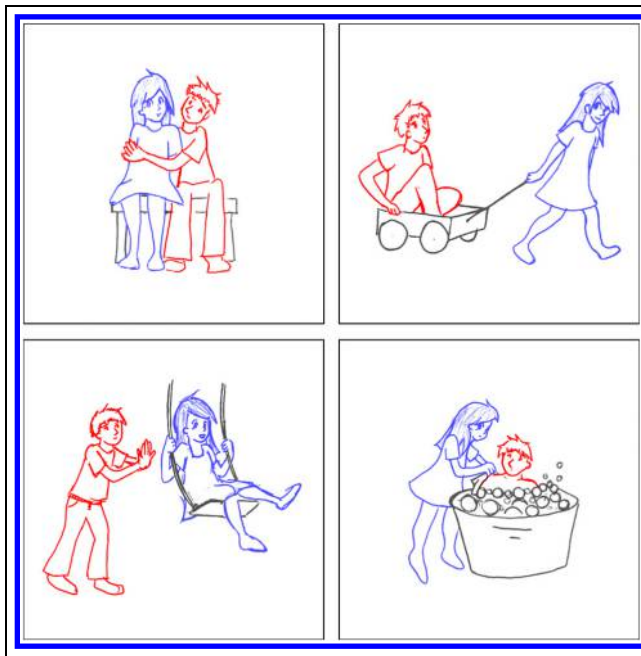
### Cortical Stimulation Mapping

Patients underwent CSM to determine essential language and sensorimotor sites located in the exposed left hemisphere cortex. Electrocortical stimulation was carried out

using an Ojemann Cortical Stimulator (Integra LifeSciences, Plainsboro, NJ) with typical settings (60 Hz, bipolar, biphasic, 1-msec pulse width). Stimulation threshold was determined on an individual basis, such that speech arrest could be elicited without causing after-discharges as determined by intraoperative electrocorticography. This threshold fell between 1.5 and 4.5 mA for all participants. The standard language tasks used were counting, picture naming, and repetition, all of which have been described previously (Leonard et al., 2016; Corina et al., 2010; Haglund et al., 1994; Ojemann et al., 1989; Ojemann, 1978). In some patients, additional tasks were used depending on the surgical site, for instance, naming to auditory definition and reading. Language and sensorimotor sites were temporarily marked with sterile paper tags.

### Sentence Production Task during Electrocortical Stimulation

To elicit sentence production, patients were presented with pictures depicting a boy and a girl engaged in one of seven simple transitive actions (push, pull, hug, kiss, kick, chase, and wash; Wilson, Dronkers, et al., 2010; Figure 1). Either the boy or the girl could be the agent, so there were 14 pictures in total. Patients were asked to describe each picture using a simple sentence (e.g., “the boy is pushing the girl”). The two nouns and seven verbs required to describe the pictures were all high in frequency and were used repeatedly throughout the procedure, minimizing demands on lexical access. The



**Figure 1.** Examples of stimulus pictures.

task was practiced before surgery, at which time all patients were readily able to describe the action pictures using appropriate syntactic constructions and lexical items.

During awake craniotomy, after completion of the other CSM tasks, action pictures were presented for description using a laptop computer, while stimulation was applied to a range of exposed frontal, temporal, and parietal sites. Pictures were presented in random order and were repeated as necessary because there were more trials than pictures. At the onset of each trial, a sound cued the surgeon to begin stimulation. The action picture was presented 1 sec after the sound, corresponding to about 500 msec after the onset of stimulation. Stimulation continued until the patient had completed his or her response (except in the case of speech arrest). When sites were found where stimulation interfered with syntactic encoding, the same location was stimulated at least twice more nonconsecutively to determine whether the disturbance was reproducible. Action pictures for sentence production were also presented periodically in the absence of cortical stimulation to determine the baseline rate and nature of any errors.

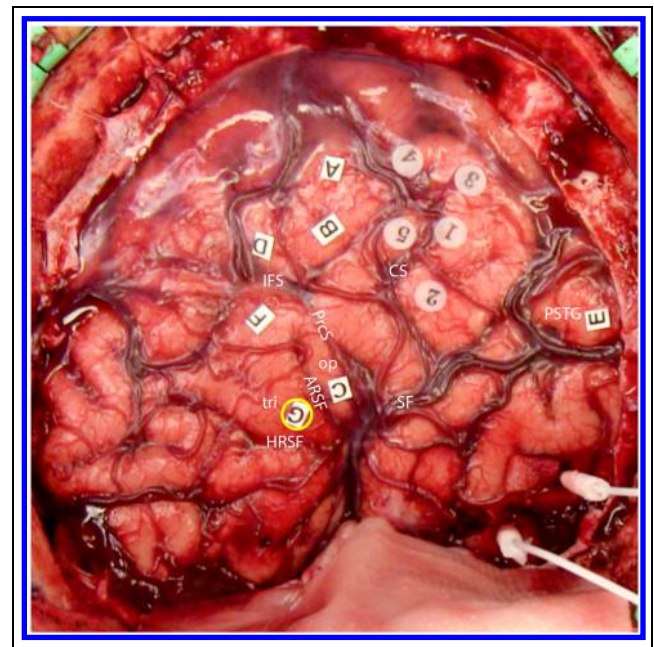
Once mapping was completed, a photograph of the completed map was taken and sites were registered using Brainlab stereotactic navigation system. An example of a completed map for one patient is shown in Figure 2.

### Analysis of Sentence Production Data

Audiovisual recordings were made of all sessions, and every trial from every patient was transcribed and coded

independently by two of the authors (G. K. and S. M. W.), one of whom (S. M. W.) was blinded to stimulus site. The two authors then discussed and resolved each discrepancy to arrive at a final set of transcriptions and codes reflecting mutual agreement.

Each trial was coded with one or more of nine possible error codes. (1) Syntactic errors were defined as utterances that were ungrammatical in any way or where the arguments were misassigned to thematic/grammatical roles (e.g., “the boy is pulling the girl” in response to the picture of the girl pulling the boy). Missing determiners were not counted as syntactic errors, because we found that some patients colloquially omitted determiners on trials without stimulation, for example, “boy’s kissing a girl.” (2) Semantic paraphasias were defined as real words that were not appropriate for describing the presented stimulus. (3) Phonemic paraphasias were defined as additions, deletions, or substitutions of phonemes or neologistic forms for which the target was unclear. (4) Perseveration was coded when the action was described with the wrong verb, reflecting the action of a previous trial. No other types of perseveration were possible, given the experimental design. (5) Pauses could be filled (“um,” “uh,” etc.) or unfilled. (6) Retravings were defined as sequences of one or more complete words that



**Figure 2.** Final cortical stimulation map from a representative patient (P1). One syntactic encoding site was observed in this patient, localized to the pars triangularis of the IFG (label G, yellow circle). Six other language sites were documented: Stimulation of Sites A–D and F resulted in speech arrest, whereas stimulation of Site E interfered with comprehension. Sites 1–5 were sensorimotor sites. CS = central sulcus; IFS = inferior frontal sulcus; PrCS = precentral sulcus; ARSF = ascending ramus of Sylvian fissure; HRSF = horizontal ramus of Sylvian fissure; op = pars opercularis of the IFG; tri = pars triangularis of the IFG; SF = Sylvian fissure; PSTG = posterior superior temporal gyrus.

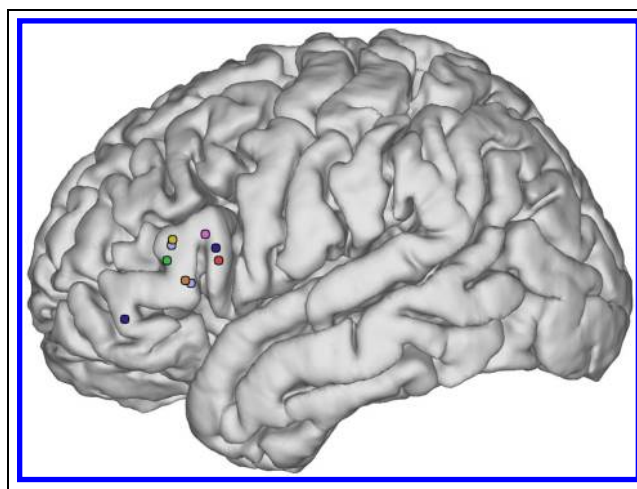
were made redundant by subsequent repetitions or amendments. Virtually all retracings involved pauses, so if an utterance was coded as retraced, it was not also coded as containing a pause. (7) False starts were coded when words were abandoned after just one or two phonemes had been produced. (8) Abandoned utterances were coded when the patient did not complete the sentence. (9) Speech arrest was defined as the complete or near-complete interruption of speech production for the duration of stimulation. Trials with speech arrest were not coded for other error codes. Finally, 15 trials (six with stimulation and nine without stimulation) were excluded for a variety of reasons, the most common being late onset of stimulation or significant after-discharge or seizure activity related to the previous trial.

Although trials coded as syntactic errors were considered to provide the clearest evidence of disruption of syntactic encoding, several other error codes could potentially also reflect interference with this process. For instance, retracings may reflect attempts to amend and repair incorrectly produced sequences, whereas perseverations may reflect difficulties in linking appropriate lexical items to the open slots in the syntactic structure.

Sites where cortical stimulation reproducibly and selectively interfered with syntactic encoding will be referred to as syntactic encoding sites and were defined as follows. Each syntactic encoding site (1) was stimulated at least three times; (2) yielded a syntactic error as defined above (i.e., an unambiguously ungrammatical utterance) on at least one trial; (3) interfered with sentence production in a manner consistent with disruption of syntactic encoding on at least 50% of stimulations—these utterances included syntactic errors but also could include retracings, perseverations, or occasionally other kinds of errors that were consistent with interference with syntactic encoding—and (4) was not identified as a language site through the standard CSM tasks of counting, picture naming, or repetition. These criteria ensured that the sites identified were reliably and selectively associated with disruption of syntactic encoding.

## RESULTS

Across the 14 patients, electrocortical stimulation was applied on 419 trials (233 IFG, 121 superior and middle temporal gyri, 30 middle frontal gyrus, 21 inferior parietal lobule, and 14 precentral or postcentral gyri), and there were 85 control trials where no stimulation was applied (mean = 6.1 per patient, range = 2–13). There were 88 distinct sites stimulated in the IFG (mean = 6.3 per patient, range = 2–9), 62 in the superior and middle temporal gyri (mean = 4.4 per patient, range = 1–10), and 28 elsewhere in the middle frontal gyrus, inferior parietal lobule, precentral gyrus, or postcentral gyrus (mean = 2.0 per patient, range = 0–8).



**Figure 3.** Syntactic encoding sites. Colors denote the seven patients in whom sites were observed: orange = P1; yellow = P2; light blue = P3; red = P7; dark blue = P8; green = P12; pink = P14.

In 7 of 14 patients, we found syntactic encoding sites where stimulation interfered with syntactic encoding in a reproducible manner but did not disrupt word level language function or automatic speech (Figure 3). In five of these patients, one syntactic site was identified, and in the other two patients, two sites were identified. All nine sites were localized to the IFG: five to the pars triangularis, three to the pars opercularis, and one to the pars orbitalis.

Transcriptions and codes of all sentences produced during stimulation of these nine sites are shown in Table 2. Disruptions of syntactic encoding took several different forms, including misassignment of arguments to grammatical roles (e.g., “the boy is chasing the boy,” P12; “the girl is being kissed by the girl,” P7), misassignment of nouns to verb slots (e.g., “the girl is boying (.) is uh (.) pushing the boy,” P1), omission of function words and/or inflectional morphology (e.g., “girl (.) kick boy,” P8; “girl is (..) kiss a (.) kiss a boy,” P8), and various paragrammatic constructions (e.g., “uh (.) the girl (.) is (.) is (..) um (.) it was bathed she bathed him,” P8).

Syntactic errors were also elicited by inferior frontal stimulation on a handful of trials from some of the seven patients for whom no sites were identified that met our definition of syntactic encoding sites. For example, P13 produced “the boy is washing the boy” when the pars triangularis was stimulated, and P6 produced “the boy is pulling the girl” (in response to the picture of the girl pulling the boy) when the pars opercularis was stimulated. Moreover, some of the seven patients in whom syntactic encoding sites were identified also produced some errors when other inferior frontal locations were stimulated; for instance, P14, who showed a reproducible site in the pars opercularis, also produced the agrammatic sentence “girl is hug the boy” when a different site in the pars opercularis was stimulated. In each of these

**Table 2.** Transcriptions of All Responses Elicited at Each Syntactic Encoding Site

<i>Patient</i>	<i>Site</i>	<i>Stimulus</i>	<i>Response</i>	<i>Error Code(s)</i>
P1	Tri	Boy hugging girl	the boy (.) is kicking (.) the girl (...) I mean is hugging	per/ret
		Girl chasing boy	<b>(..) the girl is boying (...)</b> uh <b>the girl is kicking,</b> <b>the girl is chasing the boy</b>	syn/per/ret
		Boy washing girl	(...) the girl (.) is being tʃer- er, being (.) scrubbed (.) by the boy	fs/pau/ret
		Girl pushing boy	<b>(...) the girl is boying (.) is uh (.)</b> <b>pushing the boy</b>	syn/ret
		Boy pushing girl	the boy is pushing the girl	none
P2	Tri	Girl chasing boy	the girl is chasing the boy	none
		Boy washing girl	<b>(.....) the girl is (...) bathing (...)</b> <b>bathing the girl (.) the boy is</b> <b>bathing the girl</b>	syn/ret
		Girl washing boy	the boy is pulling...	per/aban
		Boy hugging girl	(...) boy is hugging the girl	none
P3	Tri (ventral)	Boy pushing girl	the girl is (..) uh let me try that again (.) the boy is pushing the girl	ret
		Girl kissing boy	the girl is (.) kicking the (..) is kɪ- moving uh holding the bæg the boy	ret/fs/sem/phon
		Girl kicking boy	the (.....) girl is kicking the boy	arr
		Girl kicking boy	<b>the um girl is kicking the (...)</b> <b>the boy is kicking the girl</b>	syn/ret
	Tri (dorsal)	Girl washing boy	the (...) um bə- the girl is (...) washing her wrist	fs/ret
		Boy kissing girl	um (.) the (.) I can't (.) uh (.) jeez the wəɪs uh chasing the girl	arr
		Boy kissing girl	<b>the girl is kissing the (.) the boy</b> <b>is kissing the the girl</b>	syn/ret
		Girl washing boy	(...) uh the girl is (..) um (.) washing the boy	arr
P7	Op	Girl kicking boy	the boy is being kissed (.) by the girl, kicked	per/ret
		Girl kissing boy	<b>the girl is being kissed by the girl</b>	syn
		Girl washing boy	he's being washed by the girl	none
P8	Op	Girl pulling boy	uh girl is pulling a boy	none
		Boy pushing girl	uh (..) well I (..) boy is pushing girl in a swing	arr

**Table 2.** (continued)

<i>Patient</i>	<i>Site</i>	<i>Stimulus</i>	<i>Response</i>	<i>Error Code(s)</i>
		Girl kissing boy	<b>girl is (..) kiss a (.) kiss a boy</b>	syn/ret
		Girl kicking boy	<b>girl (.) kick boy</b>	syn/pau
		Boy chasing girl <sup>a</sup>	um ... girl is is boy chasing girl	arr
		Boy kicking girl <sup>a</sup>	um (.) boy kɪ- kɪ- kicking kicking girl or	fs/ret
		Boy pushing girl <sup>a</sup>	<b>um (..) sh- uh he's p- p- uh s- sw- swinging him (.) on a little swing (.) he's pushing her</b>	syn/fs/ret
		Boy kissing girl <sup>a</sup>	<b>the girl is kɪ- kɪ- kissing the boy ah is kiss- I mean the boy is kissing the girl</b>	syn/fs/ret
		Boy kissing girl <sup>a</sup>	<b>the girl's (.) kiss- is kiss- kissing (.) the boy is kissing the girl</b>	syn/ret
		Girl washing boy <sup>a</sup>	<b>ah (.) the girl (.) is (.) is (..) um (.) it was bathed she bathed him</b>	syn/ret
	Orb	Boy kicking girl	<b>(..) um (..) the (.) uh boy is uh um (..) uh um (.) kick girl</b>	syn/pau
		Girl washing boy	um (..) girl is chasing (.) a boy	pau
		Girl pushing boy	<b>same thing um (..) boy a- are um (..) oh switcheroos ok xxx a girl (.) pushin' a boy (.) in a swing</b>	syn/fs/ret
		Boy chasing girl	um (..) girl (.) um (.) boy is chasing girl	ret
		Boy washing girl	<b>boy is (..) is uh um (..) is uh uh (.) um (.) washing (.) uh (.) wash girl in the tub</b>	syn/ret
P12	Tri	Boy kissing girl	the boy is kissing the girl	none
		Girl chasing boy	<b>the boy is chasing the boy ... er sorry did i say that wrong? the girl is chasing the boy</b>	syn
		Boy pushing girl	<b>the girl is (.) s- swinging the girl</b>	syn/fs/pau
		Girl pulling boy	the girl is pulling the boy	none
P14	Op	Girl chasing boy	um (..) girl is chasing (.) boy	pau
		Boy pushing girl	(...) boy is effective um (..) sorry ha, boy is pushing the girl's swing	sem/pau
		Girl pulling boy	(..) um boy (.) has (..) turned um (.) trailer	sem/pau
		Boy pulling girl	<b>(...) boy (.) i- is chase of girl in th- um (..) trailer</b>	syn/per/fs/pau
		Boy washing girl	(...) boy has (.) enough um (..) boy...	sem/ret

Op = pars opercularis; Tri = pars triangularis; Orb = pars orbitalis; syn = syntactic error (utterances in bold typeface); sem = semantic paraphasia; phon = phonemic paraphasia; per = perseveration; pau = pause; ret = retracing; fs = false start; aban = abandoned utterance; arr = speech arrest.

<sup>a</sup>Trials from the second surgery.

**Table 3.** Percentages of Error Types Arising from Stimulation to Each Brain Region

<i>Error Code</i>	<i>IFG</i>	<i>STG/MTG</i>	<i>Other</i>	<i>No Stimulation</i>	<i>p (F ≠ T)</i>	<i>p (F ≠ N)</i>
Syntactic error (%)	10	2	0	0	.0022*	.0006*
Semantic paraphasia (%)	2	0	2	0	N/A	N/A
Phonemic paraphasia (%)	1	2	2	1	N/A	N/A
Perserveration (%)	7	2	2	2	.040*	.17
Pause (%)	21	21	12	16	.89	.35
Retracing (%)	16	7	9	6	.030*	.024*
False start (%)	7	5	5	5	.50	.61
Abandoned utterance (%)	1	2	0	0	N/A	N/A
Speech arrest (%)	10	4	8	0	.064	.0006*
Total number of trials	233	121	65	85		

Error frequencies were compared between trials with frontal (*F*) and temporal (*T*) stimulation and between frontal (*F*) and no (*N*) stimulation, for error types that occurred at least 10 times, using a series of Fisher's exact tests (two-tailed). STG/MTG = superior temporal gyrus/middle temporal gyrus.

\*Significant after correction for multiple comparisons using positive false discovery rate (Storey, 2002) as implemented in the MATLAB function *mafdr*.

three examples, the reproducibility of the syntactic disturbances was not demonstrated, and therefore these sites did not meet our criteria for syntactic encoding sites. That said, repeated response effects after stimulation can sometimes be inconsistent, even in sensory and motor cortex, and such errors did not occur at all in the absence of stimulation.

In one patient (P10), a site was identified in the superior temporal gyrus where disruption of sentence production was reproducible. However, stimulation of this site also reliably disrupted the word level tasks of naming and repetition; therefore, it was not considered a syntactic encoding site. Syntactic errors elicited from stimulation of this site included "(.) um (.) boy is (..) kicking the boy (.) ð- the girl" and "the uh (.) uh girl is m- g- (.) the boy."

As an alternative analytical approach that did not depend on our definition of syntactic encoding sites, we tabulated across all 14 patients the percentages of trials coded with each of the nine error types as a function of stimulation site (Table 3). This analysis showed that stimulation of the IFG was more likely than stimulation of the temporal cortex to result in syntactic errors ( $p = .002$ ), perseverations ( $p = .040$ ), and retracings ( $p = .030$ ), but not any of the other error types. Syntactic errors are likely to directly reflect disruption of syntactic encoding, and perseverations and retracings could also represent consequences of interference with syntactic encoding.

## DISCUSSION

Our results indicate that the left IFG is critically important for syntactic encoding during sentence production. We observed clear evidence that direct electrocortical stimu-

lation of the IFG resulted in reproducible and selective disturbances of sentence production. Syntactic encoding sites were documented in 7 of 14 patients (50%), which is comparable with the frequency at which speech arrest sites are detected in the course of standard CSM (58.0%; Sanai, Mirzadeh, & Berger, 2008) and higher than the frequency at which sites associated with anomia have been identified (32.8%; Sanai et al., 2008). All but one of the syntactic encoding sites were localized to the pars triangularis or pars opercularis of the IFG, which together make up Broca's area (Amunts et al., 1999). None of the syntactic encoding sites was identified during routine CSM tasks of counting, naming, or repetition, suggesting that these sites are selectively involved in sentence production.

Although few CSM studies have investigated language processes beyond the word level (Rofes & Miceli, 2014), there have been several prior studies that have used tasks incorporating aspects of syntactic encoding. Vidorreta, Garcia, Moritz-Gasser, and Duffau (2011) used CSM to investigate the production of determiners in French, which are marked for grammatical gender, a lexical-syntactic feature. In six of nine patients, sites were found where cortical stimulation elicited reproducible disturbances of grammatical gender selection. In three patients, these sites were localized to the IFG, and in the other three, they were localized to the posterior middle temporal gyrus. Interestingly, there was no overlap between sites linked to grammatical gender processing and those where stimulation induced naming disturbances. The involvement of temporal and frontal sites in producing determiners marked for grammatical gender may reflect the fact that grammatical gender is a syntactic property of individual lexical items; that is, grammatical gender is



largely arbitrary and so must be stored in the lexical entry for each noun.

Lubrano, Filleron, Démonet, and Roux (2014) compared object and action naming, but in the later case, the verb describing the action was required to be produced in a context requiring finite inflection (e.g., “he runs”). Naming errors were elicited from a range of frontal, temporal, and parietal sites, with a tendency for frontal sites to be differentially associated with action naming disturbances. However, the authors did not report that any (morpho)syntactic disturbances were induced (e.g., “he run”). Gonen et al. (2017) reported that 1 of a series of 15 patients made syntactic errors when two sites were simultaneously stimulated—one in the IFG and one in the anterior superior temporal sulcus—but the nature of the syntactic errors was not described.

Syntactic errors induced by cortical stimulation have been described by Ojemann and Mateer (1979) and Ojemann (1983), for example, “If my son will getting late today, he’ll see the principal” (Ojemann & Mateer, 1979, p. 1402). Errors of this nature were elicited through stimulation of several frontal, temporal, and parietal sites, unlike in the present study where such errors were elicited only by inferior frontal stimulation. The tasks used in these studies involved completion of written sentences or reading of written sentences. It is possible that the discrepancy between these findings and the present study may relate to the receptive syntactic component entailed by the sentence reading tasks. Several studies have used CSM to investigate sentence comprehension (Bello et al., 2007) and naming to auditory description, which depends on sentence comprehension (Hamberger, McClelland, McKhann, Williams, & Goodman, 2007; Hamberger, Seidel, McKhann, Perrine, & Goodman, 2005; Hamberger, Seidel, Goodman, Perrine, & McKhann, 2003), and have uniformly reported that these tasks are disrupted by stimulation of posterior temporal and inferior parietal sites, rather than frontal sites. This suggests that the distributed set of regions reported to elicit syntactic errors in sentence reading and sentence completion tasks may reflect a combination of expressive disturbances (frontal sites) and receptive disturbances (posterior sites). Other studies using sentence reading have reported several kinds of disturbances induced by frontal, temporal, and parietal stimulation, but syntactic disturbances were not included among the types of disruptions reported (Roux et al., 2004; Roux & Trémoulet, 2002).

Our finding that the left IFG is important for syntactic encoding during sentence production accords well with some findings from other methodologies. Using PET, Indefrey et al. (2001, 2004) showed that caudal Broca’s area is modulated by the complexity of syntactic encoding during a restrictive scene description task. Another study using fMRI showed that Broca’s area is recruited for reordering pseudorandomly ordered sets of words into grammatical sentences, above and beyond its involvement in word or sentence reading (Haller et al.,

2005). Anodal transcranial direct current stimulation of Broca’s area has been reported to improve sentence production in healthy participants (Nozari, Arnold, & Thompson-Schill, 2014) and individuals with aphasia (Marangolo et al., 2013).

Some lesion-deficit studies are also concordant with the present findings. In primary progressive aphasia, neurodegeneration of left inferior frontal regions is associated with syntactic errors, nonsentence utterances, and reduced use of embedded clauses (Wilson, Henry, et al., 2010) and with reductions on grammar and fluency measures (Wilson et al., 2011; Sapolsky et al., 2010). One study of a patient with acute stroke showed that transient hypoperfusion of Broca’s area resulted in agrammatism, among other language symptoms, which resolved when perfusion was restored (Davis et al., 2008). Generally, in vascular aphasia, frontal regions are more strongly associated with expressive agrammatism than temporal regions (Faroqi-Shah et al., 2014; Borovsky, Saygin, Bates, & Dronkers, 2007; Vanier & Caplan, 1990).

However, other lesion-deficit studies suggest that the IFG is not critical for syntactic encoding or perhaps even for any language functions. In a seminal stroke study, Mohr (1976) and Mohr et al. (1978) showed that, when infarction is restricted to the IFG, agrammatism is rare and any deficits are generally only transient. Surgical resection of the frontal operculum also does not often result in agrammatism or any significant persistent aphasia (Rolston et al., 2015; Wilson et al., 2015; Lubrano, Draper, & Roux, 2010; Plaza, Gatignol, Leroy, & Duffau, 2009; Kral, Kurthen, Schramm, Urbach, & Meyer, 2006; Penfield & Roberts, 1959). For example, Rolston and colleagues (2015) reported persistent language deficits in only 4 of 41 patients who were followed up after resection of tumors in the frontal operculum. A limitation of this study is that detailed language or neuropsychological testing was not carried out; subtle postoperative language deficits may be apparent only with quantitative linguistic analysis (McCarron et al., 2017). Resolving the discrepancies between these divergent results from different methodological approaches and patient populations will be an important goal for future research.

Our study had several noteworthy limitations. First, because all of the patients were undergoing surgery for epilepsy, gliomas, or cavernous malformations, it is possible that some reorganization of language regions may have already taken place (Lubrano et al., 2010). However, individual patterns of reorganization would presumably make the neural correlates of any given cognitive process less consistent rather than more consistent, so the tight clustering of syntactic encoding sites to the IFG suggests that there was minimal reorganization of this function in our patient cohort. Furthermore, most of the lesions in our study cohort were not directly adjacent to the IFG, reducing the likelihood of reorganizational processes. Also contributing to potential variability, one patient was left-handed with mixed language dominance, another



was ambidextrous, and two were not native speakers of English, which could have implications for language organization (Giussani, Roux, Lubrano, Gaini, & Bello, 2007; Roux & Trémoulet, 2002). However, any individual differences in language organization arising from these factors were not sufficient to obscure the consistent localization of syntactic encoding sites we observed.

Second, our study focused on the use of CSM for identifying critical sites that are localized to the surfaces of gyri. Because of this, we cannot determine whether there are additional syntactic encoding sites buried in sulci or underlying subcortical white matter tracts. It is possible that, in some or all of the seven patients for whom no syntactic encoding sites were identified, syntactic encoding sites might exist in these regions that were not stimulated.

Third, not all of the sentence production disruptions that were elicited by stimulation of the syntactic encoding sites were unambiguously syntactic. Although each site was required to be associated with at least one syntactic error, other utterances were characterized by retractions or perseverations, the provenance of which is less clear. Note that, in our study, perseverations were elicited more frequently by inferior frontal than temporal stimulation. In contrast, Leonard and colleagues (2016) showed that, in a repetition task, perseverations were elicited by stimulation of the posterior superior temporal gyrus and supramarginal gyrus. This suggests that the perseveration in any given task reflects filling in after the neural substrates specific to the particular task are disrupted, which bolsters our assumption that perseveration in the sentence production task reflects breakdowns of syntactic encoding.

In summary, we showed that, in many patients, direct electrocortical stimulation of the IFG resulted in reproducible and selective disturbances of sentence production, suggesting that this region plays an important role in syntactic encoding.

### Acknowledgments

We thank the patients for their participation in this research and Vitória Piai and an anonymous reviewer for helpful comments. This work was supported by the National Institutes of Health (Grant numbers NS065120, NS098971, DC013270, DC016080, and DC012379), the New York Stem Cell Foundation, the Howard Hughes Medical Institute, the McKnight Foundation, the Shurl and Kay Curci Foundation, and the William K. Bowes Foundation. E. F. C. is a New York Stem Cell Foundation Robertson Investigator.

Reprint requests should be sent to Stephen M. Wilson, Department of Hearing and Speech Sciences, Vanderbilt University Medical Center, 1215 21st Ave. S, MCE 8310, Nashville, TN 37232, or via e-mail: stephen.m.wilson@vanderbilt.edu.

### REFERENCES

Amunts, K., Schleicher, A., Bürgel, U., Mohlberg, H., Uylings, H. B., & Zilles, K. (1999). Broca's region revisited: Cytoarchitecture and intersubject variability. *Journal of Comparative Neurology*, *412*, 319–341.

Bello, L., Gallucci, M., Fava, M., Carrabba, G., Giussani, C., Acerbi, F., et al. (2007). Intraoperative subcortical language tract mapping guides surgical removal of gliomas involving speech areas. *Neurosurgery*, *60*, 67–82.

Boatman, D. (2004). Cortical bases of speech perception: Evidence from functional lesion studies. *Cognition*, *92*, 47–65.

Borovsky, A., Saygin, A. P., Bates, E., & Dronkers, N. (2007). Lesion correlates of conversational speech production deficits. *Neuropsychologia*, *45*, 2525–2533.

Corina, D. P., Loudermilk, B. C., Detwiler, L., Martin, R. F., Brinkley, J. F., & Ojemann, G. (2010). Analysis of naming errors during cortical stimulation mapping: Implications for models of language representation. *Brain and Language*, *115*, 101–112.

Cushing, H. (1909). A note upon the faradic stimulation of the postcentral gyrus in conscious patients. *Brain*, *32*, 44–53.

Davis, C., Kleinman, J. T., Newhart, M., Gingis, L., Pawlak, M., & Hillis, A. E. (2008). Speech and language functions that require a functioning Broca's area. *Brain and Language*, *105*, 50–58.

Duffau, H., Capelle, L., Denvil, D., Sichez, N., Gatignol, P., Lopes, M., et al. (2003). Functional recovery after surgical resection of low grade gliomas in eloquent brain: Hypothesis of brain compensation. *Journal of Neurology, Neurosurgery and Psychiatry*, *74*, 901–907.

Duffau, H., Gatignol, P., Mandonnet, E., Capelle, L., & Taillandier, L. (2008). Intraoperative subcortical stimulation mapping of language pathways in a consecutive series of 115 patients with Grade II glioma in the left dominant hemisphere. *Journal of Neurosurgery*, *109*, 461–471.

Duffau, H., Gatignol, P., Mandonnet, E., Peruzzi, P., Tzourio-Mazoyer, N., & Capelle, L. (2005). New insights into the anatomo-functional connectivity of the semantic system: A study using cortico-subcortical electrostimulations. *Brain*, *128*, 797–810.

Faroqi-Shah, Y., Kling, T., Solomon, J., Liu, S., Park, G., & Braun, A. (2014). Lesion analysis of language production deficits in aphasia. *Aphasiology*, *28*, 258–277.

Ferreira, F., & Engelhardt, P. E. (2006). Syntax and production. In M. J. Traxler & M. A. Gernsbacher (Eds.), *Handbook of psycholinguistics* (2nd ed., pp. 61–92). San Diego, CA: Academic Press.

Garrett, M. F. (1980). Levels of processing in sentence production. In B. Butterworth (Ed.), *Language production, Vol. 1, Speech and talk* (pp. 177–220). London: Academic Press.

Giussani, C., Roux, F.-E., Lubrano, V., Gaini, S. M., & Bello, L. (2007). Review of language organisation in bilingual patients: What can we learn from direct brain mapping? *Acta Neurochirurgica*, *149*, 1109–1116.

Gonen, T., Gazit, T., Korn, A., Kirschner, A., Perry, D., Hendler, T., et al. (2017). Intra-operative multi-site stimulation: Expanding methodology for cortical brain mapping of language functions. *PLoS One*, *12*, e0180740.

Haglund, M. M., Berger, M. S., Shamseldin, M., Lettich, E., & Ojemann, G. A. (1994). Cortical localization of temporal lobe language sites in patients with gliomas. *Neurosurgery*, *34*, 567–576.

Haller, S., Radue, E. W., Erb, M., Grodd, W., & Kircher, T. (2005). Overt sentence production in event-related fMRI. *Neuropsychologia*, *43*, 807–814.

Hamberger, M. J., McClelland, S., McKhann, G. M., Williams, A. C., & Goodman, R. R. (2007). Distribution of auditory and visual naming sites in nonlesional temporal lobe epilepsy patients and patients with space-occupying temporal lobe lesions. *Epilepsia*, *48*, 531–538.

Hamberger, M. J., Seidel, W. T., Goodman, R. R., Perrine, K., & McKhann, G. M. (2003). Temporal lobe stimulation reveals anatomic distinction between auditory naming processes. *Neurology*, *60*, 1478–1483.

- Hamberger, M. J., Seidel, W. T., McKhann, G. M., Perrine, K., & Goodman, R. R. (2005). Brain stimulation reveals critical auditory naming cortex. *Brain*, *128*, 2742–2749.
- Indefrey, P., Brown, C. M., Hellwig, F., Amunts, K., Herzog, H., Seitz, R. J., et al. (2001). A neural correlate of syntactic encoding during speech production. *Proceedings of the National Academy of Sciences, U.S.A.*, *98*, 5933–5936.
- Indefrey, P., Hellwig, F., Herzog, H., Seitz, R. J., & Hagoort, P. (2004). Neural responses to the production and comprehension of syntax in identical utterances. *Brain and Language*, *89*, 312–319.
- Kertesz, A. (1982). *Western aphasia battery*. New York: Grune and Stratton.
- Kral, T., Kurthen, M., Schramm, J., Urbach, H., & Meyer, B. (2006). Stimulation mapping via implanted grid electrodes prior to surgery for gliomas in highly eloquent cortex. *Neurosurgery*, *58*(1 Suppl.), ONS36–ONS43.
- Krause, F. (1909). Die operative Behandlung der Epilepsie. *Medizinische Klinik*, *5*, 1418–1422.
- Leonard, M. K., Cai, R., Babiak, M. C., Ren, A., & Chang, E. F. (2016). The peri-Sylvian cortical network underlying single word repetition revealed by electrocortical stimulation and direct neural recordings. *Brain and Language*. doi:10.1016/j.bandl.2016.06.001.
- Lubrano, V., Draper, L., & Roux, F.-E. (2010). What makes surgical tumor resection feasible in Broca's area? Insights into intraoperative brain mapping. *Neurosurgery*, *66*, 868–875.
- Lubrano, V., Filleron, T., Démonet, J.-F., & Roux, F.-E. (2014). Anatomical correlates for category-specific naming of objects and actions: A brain stimulation mapping study. *Human Brain Mapping*, *35*, 429–443.
- Marangolo, P., Fiori, V., Calpagnano, M. A., Campana, S., Razzano, C., Caltagirone, C., et al. (2013). tDCS over the left inferior frontal cortex improves speech production in aphasia. *Frontiers in Human Neuroscience*, *7*, 539.
- McCarron, A., Chavez, A., Babiak, M. C., Berger, M. S., Chang, E. F., & Wilson, S. M. (2017). Connected speech in transient aphasias after left hemisphere resective surgery. *Aphasiology*, *31*, 1266–1281.
- Mohr, J. P. (1976). Broca's area and Broca's aphasia. In H. Whitaker & H. Whitaker (Eds.), *Studies in neurolinguistics* (Vol. 1, pp. 201–233). New York: Academic Press.
- Mohr, J. P., Pessin, M. S., Finkelstein, S., Funkenstein, H. H., Duncan, G. W., & Davis, K. R. (1978). Broca aphasia: Pathologic and clinical. *Neurology*, *28*, 311–324.
- Nozari, N., Arnold, J. E., & Thompson-Schill, S. L. (2014). The effects of anodal stimulation of the left prefrontal cortex on sentence production. *Brain Stimulation*, *7*, 784–792.
- Ojemann, G. A. (1978). Organization of short-term verbal memory in language areas of human cortex: Evidence from electrical stimulation. *Brain and Language*, *5*, 331–340.
- Ojemann, G. A. (1983). Brain organization for language from the perspective of electrical stimulation mapping. *Behavioral and Brain Sciences*, *6*, 189–206.
- Ojemann, G., & Mateer, C. (1979). Human language cortex: Localization of memory, syntax, and sequential motor-phoneme identification systems. *Science*, *205*, 1401–1403.
- Ojemann, G., Ojemann, J., Lettich, E., & Berger, M. (1989). Cortical language localization in left, dominant hemisphere: An electrical stimulation mapping investigation in 117 patients. *Journal of Neurosurgery*, *71*, 316–326.
- Plaza, M., Gatignol, P., Leroy, M., & Duffau, H. (2009). Speaking without Broca's area after tumor resection. *Neurocase*, *15*, 294–310.
- Penfield, W., & Roberts, L. (1959). *Speech and brain mechanisms*. Princeton, NJ: Princeton University Press.
- Rofes, A., & Miceli, G. (2014). Language mapping with verbs and sentences in awake surgery: A review. *Neuropsychology Review*, *24*, 185–199.
- Rolston, J. D., Englot, D. J., Benet, A., Li, J., Cha, S., & Berger, M. S. (2015). Frontal operculum gliomas: Language outcome following resection. *Journal of Neurosurgery*, *122*, 725–734.
- Roux, F.-E., Lubrano, V., Lauwers-Cances, V., Trémoulet, M., Mascott, C. R., & Démonet, J.-F. (2004). Intra-operative mapping of cortical areas involved in reading in mono- and bilingual patients. *Brain*, *127*, 1796–1810.
- Roux, F.-E., Minkin, K., Durand, J.-B., Sacko, O., Réhault, E., Tanova, R., et al. (2015). Electrostimulation mapping of comprehension of auditory and visual words. *Cortex*, *71*, 398–408.
- Roux, F.-E., & Trémoulet, M. (2002). Organization of language areas in bilingual patients: A cortical stimulation study. *Journal of Neurosurgery*, *97*, 857–864.
- Sanai, N., Mirzadeh, Z., & Berger, M. S. (2008). Functional outcome after language mapping for glioma resection. *New England Journal of Medicine*, *358*, 18–27.
- Sapolsky, D., Bakkour, A., Negreira, A., Nalipinski, P., Weintraub, S., Mesulam, M. M., et al. (2010). Cortical neuroanatomic correlates of symptom severity in primary progressive aphasia. *Neurology*, *75*, 358–366.
- Storey, J. D. (2002). A direct approach to false discovery rates. *Journal of the Royal Statistical Society, Series B: Statistical Methodology*, *64*, 479–498.
- Vanier, M., & Caplan, D. (1990). CT-scan correlates of agrammatism. In L. Menn & L. K. Obler (Eds.), *Agrammatic aphasia: A cross-language narrative sourcebook* (Vol. 1, pp. 37–115). Amsterdam: John Benjamins.
- Vidorreta, J. G., Garcia, R., Moritz-Gasser, S., & Duffau, H. (2011). Double dissociation between syntactic gender and picture naming processing: A brain stimulation mapping study. *Human Brain Mapping*, *32*, 331–340.
- Wilson, S. M., Dronkers, N. F., Ogar, J. M., Jang, J., Growdon, M. E., Agosta, F., et al. (2010). Neural correlates of syntactic processing in the non-fluent variant of primary progressive aphasia. *Journal of Neuroscience*, *30*, 16845–16854.
- Wilson, S. M., Eriksson, D. K., Schneck, S. M., & Lucanie, J. M. (2017). A quick aphasia battery for efficient, reliable, and multidimensional assessment of language function. [test battery]. Available from <http://langneurosci.mc.vanderbilt.edu/resources.html>.
- Wilson, S. M., Galantucci, S., Tartaglia, M. C., Rising, K., Patterson, D. K., Henry, M. L., et al. (2011). Syntactic processing depends on dorsal language tracts. *Neuron*, *72*, 397–403.
- Wilson, S. M., Henry, M. L., Besbris, M., Ogar, J. M., Dronkers, N. F., Jarrold, W., et al. (2010). Connected speech production in three variants of primary progressive aphasia. *Brain*, *133*, 2069–2088.
- Wilson, S. M., Lam, D., Babiak, M. C., Perry, D. W., Shih, T., Hess, C. P., et al. (2015). Transient aphasias after left hemisphere resective surgery. *Journal of Neurosurgery*, *123*, 581–593.